

Waterproofing and Restoration

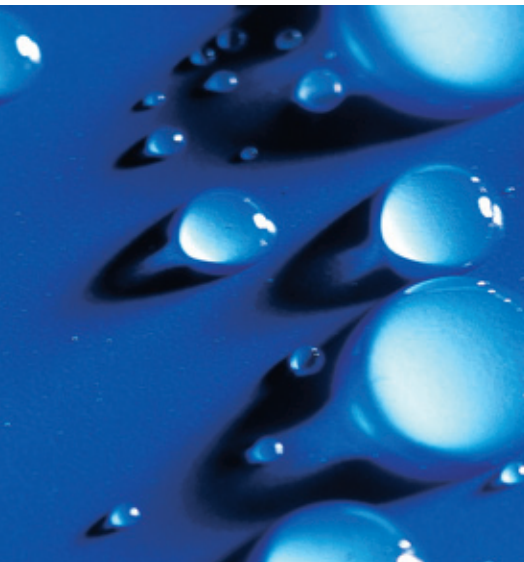
Tile and Natural Stone Laying

Screeds and Industrial Floor Coatings

Garden and Landscape Construction

Other Construction Materials

Capillary/Crystalline Waterproofing
for concrete structures



Capillary/Crystalline Waterproofing

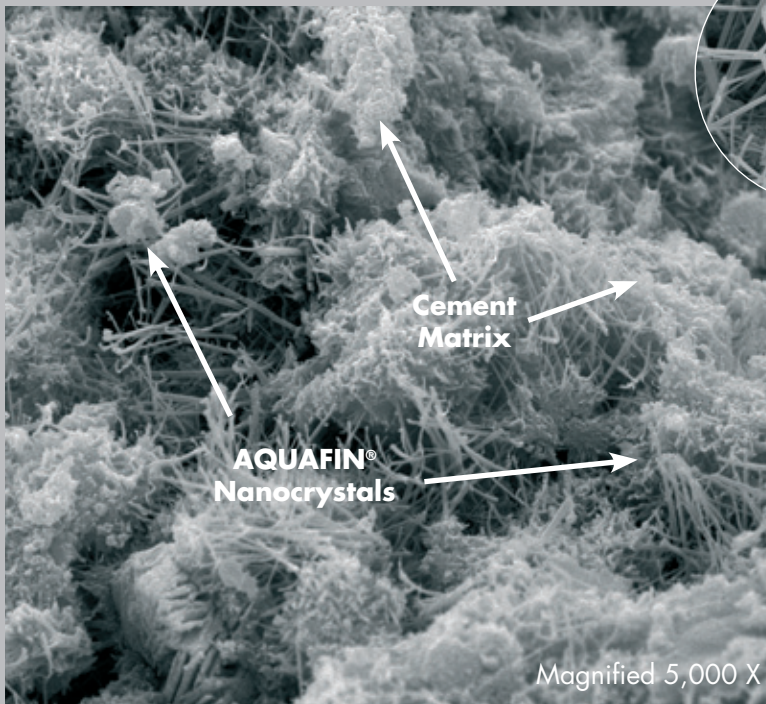
...waterproofs concrete in depth

AQUAFIN®-IC is a unique one-component, penetrating waterproofing system. Based on cementitious materials, **AQUAFIN®-IC** contains chemicals, that penetrate into the concrete surface making the concrete itself part of the waterproofing. The waterproofing properties stay intact, even if the coating is partially removed or small cracks develop after the application.

Due to its high resistance to hydrostatic pressure (tested up to 130 m [200 psi] positive and negative side), **AQUAFIN®-IC** is the perfect waterproofing material for large concrete structures such as water tanks, water catchment basins or wastewater treatment plants. Other typical applications are in parking structures, tunnels, elevator pits, manholes and waterproofing of below grade foundations and walls.



Magnified AQUAFIN®-IC nanocrystals



Treated concrete becomes watertight as crystalline fibers fill the capillary voids.

Magnified picture (10,000 X) of AQUAFIN®-IC nanocrystals.

penetrates into the concrete...



Advantages:

- Self healing (static cracks up to 0.4 mm)
- Waterproofing properties stay intact, even if the coating gets damaged
- Easy to apply
- Low consumption / economical
- Fast setting and hardening
- Minimal discoloration
- Permanent



Applications:

AQUAFIN®-IC may be used on all new or old structurally sound concrete surfaces not subject to movement. It is also suitable for concrete masonry or as a dry shake on fresh concrete slabs.

Typical areas of application are:

- Potable water tanks
- Waste water treatment plants
- Tunnels
- Elevator pits
- Manholes
- Foundations
- Below grade waterproofing





Application:

AQUAFIN®-IC, gray or white can be applied by brush or appropriate spray equipment. It may also be applied as a dry shake on fresh concrete slabs.

AQUAFIN®-IC is simply mixed with water with a slow moving drill. The working time is approximately 30 min. at +23°C.

Supplemental Products:

- **FIX 10-S**
30 sec. plug cement.
- **ASOCRET®-IM**
(USA: **MORTAR-IC**)
Crystalline sealing and repair mortar.
- **ASOCRET®-RN**
(USA: **MORTAR-40**)
Polymer modified structural repair mortar.

We recommend the use of **AQUAFIN®-2K/M** in combination with our joint tapes for applications where static and dynamic crack bridging capabilities are required.

AQUAFIN®-1K for negative side waterproofing of brick and CMU substrates

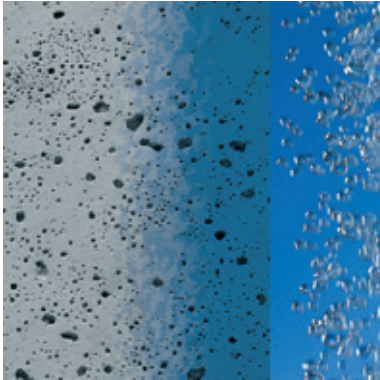


AQUAFIN®-IC

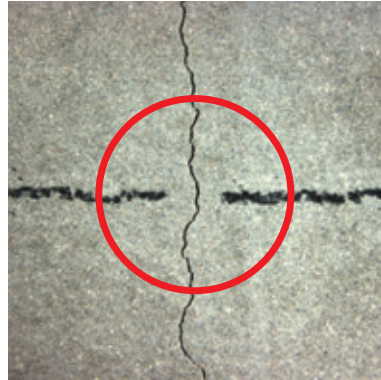
The Chemistry of AQUAFIN®-IC

The pictures below illustrate the basic behavior of **AQUAFIN®-IC** on a concrete substrate:

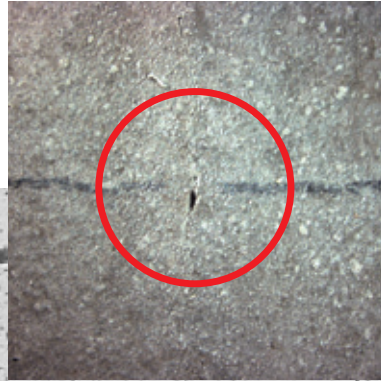
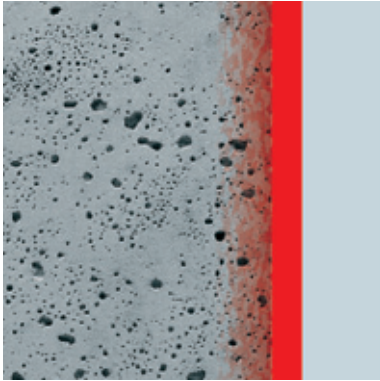
Untreated concrete is a porous system, which is prone to water penetration.



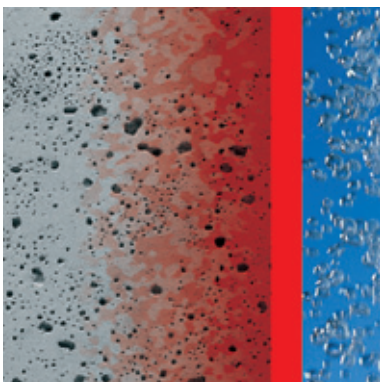
The following photos illustrate the crack-sealing capabilities of **AQUAFIN®-IC** for static (non-moving) cracks:



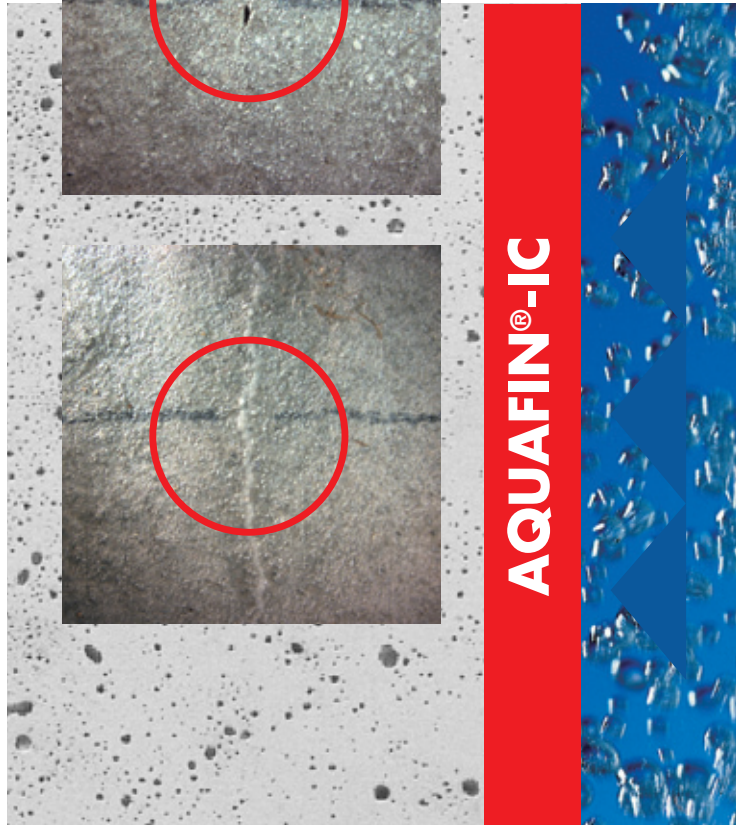
Application: **AQUAFIN®-IC** (red) is applied to the concrete surface. The active ingredients of **AQUAFIN®-IC** start to penetrate into the capillary pores.



Inside the capillary pores the chemicals react with the free lime and moisture forming insoluble crystals. The mechanism moves further into the concrete, sealing the pores.



Result: **AQUAFIN®-IC** is not only a coating, it becomes an integral part of the concrete!



SCHOMBURG GmbH & Co. KG, with its two divisions, is an international firm supplying the construction sector with high quality, innovative building materials. With a state of the art production facility, internal R&D team and excellent technical expertise SCHOMBURG is a dominant market force.

SCHOMBURG GmbH Detmold reaches the German market through a network of distributors specializing in materials for:

- Waterproofing and restoration
- Tile and natural stone setting systems
- Screeds and floor coatings
- Products for gardening and landscaping construction and other construction materials

SCHOMBURG is a partner for specialised distributors in both the national and international market.

The INDUTEC RETHMEIER GmbH aims its focuses at two branches:

The core competency of the RETHMEIER sales division lies in the concrete construction industry. With a focus on concrete block, pre-cast concrete and ready-mix concrete, they deliver a range of products encompassing:

- Concrete additives
- Form release agents and accessory products
- Concrete Pigments

The INDUTEC sales division services and consults Architects, Engineers and Contractors about products and systems for:

- Industrial flooring
- Parking garage construction
- Roadway and track construction
- Water tank construction, and
- Concrete restoration

Industry professionals value the level of service provided by the SCHOMBURG Group, along with our large range of high quality products.

In order to stay at the forefront of a continuously advancing market we are always investing in research and development of new and current products. This guarantees high quality products, which in turn leads to customer satisfaction.



SCHOMBURG GmbH & Co. KG
Aquafinstraße 2-8
D-32760 Detmold - Germany
phone +49-5231-953-00
fax +49-5231-953-108
mail export@schomburg.de
web www.schomburg.com